



making work easy



New  
Products  
2019

- ➔ Equipment
- ➔ Instruments
- ➔ Materials
- ➔ and more

# How do you know what makes work easier?

Easy working, clear direction. Renfert products have a wide range of advantages, which users will appreciate each day for years to come. You can identify them quickly and easily with these five icons:

making work easy



tool included



easy use



silent



perfect  
view



compact

## New products | Contents

<b>EASY view 3D</b> , 3D video microscope	4–5	<b>SILENT powerCAM EC</b> , CAM extraction	11
<b>AUTO spin</b> , Model system	6	<b>GEO Expert Functional</b> , Functional modeling waxes	12
<b>Overview Extraction units</b>	7	<b>GEO Expert Gingiva</b> , Esthetic modeling waxes	13
<b>SILENT EC2</b> , Two workbench extraction	8	<b>Dynex Brilliant</b> , Separating and grinding discs	14
<b>SILENT TC2</b> , Two workbench extraction	9	<b>Dynex</b> , Separating and grinding discs	14
<b>SILENT TC</b> , Single workbench extraction	10	<b>Renfert Dental Education</b>	15



### WORKFLOW GUARANTEE

3 year guarantee  
10 year spare parts service  
Activity guarantee



#### 3 year guarantee\*

All Renfert laboratory devices have a three year guarantee.\* If at some point something does not function, you still have the comforting assurance that Renfert will find a solution to the problem within the guarantee. This builds trust.

\*Wear parts excluded



#### 10 year spare parts guarantee

All Renfert products are very durable. Therefore we guarantee a high availability of spare parts. Renfert guarantees that original spare parts will be available for every device, for the duration of at least ten years after purchase. This provides security.



#### The activity guarantee

Renfert service is outstandingly efficient. In cooperation with Renfert dealers and certified service partners worldwide, a strong, competent and passionate team is focused on minimizing possible failures in the laboratory. This ensures efficiency.

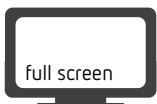
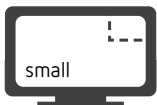


## EASY view 3D – whenever magnification makes work easy

- 1 Support for daily processing of classically fabricated and digitally manufactured precision work
- 2 Reliable quality control and quality management
- 3 Quick and easy communication with the dental practice, patients and specialists
- 4 Creation of photos and video sequences



**INNOVATION BW**  
**INNOV 2018**  
 Innovation Award Baden-Württemberg  
 Dr.-Rudolf-Eberle-Preis  
 Recognition 2018

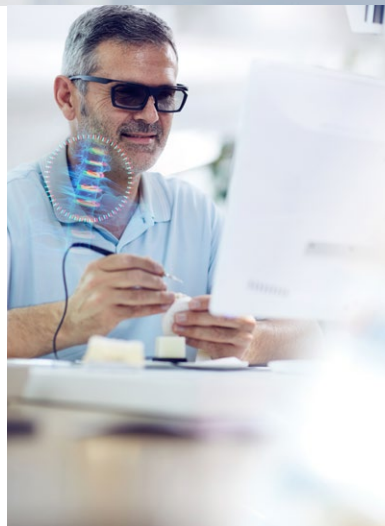


### Split-screen function for parallel use of multiple images

With the split screen feature of the EASY view 3D video microscope, four different sized images can be projected on the work screen. All pictures can also be viewed in black-and-white mode, e.g. for the assessment of brightness values.

### Optimum assessment of object structures in 3D mode

The EASY view 3D's three-dimensional mode enables easy hand-eye coordination and a natural working position. Its three-dimensional spatial representation is perfect for critically examining work objects. This makes many routine tasks, like finishing and modeling, much more precise and safer. Depending on the indication, a simple mouse click lets you toggle between the 3D and 2D modes.



### Work ergonomically

A dental technician's work assumes a new dimension with the EASY view 3D: The ergonomic design enables a sustained natural and healthy posture. This enhances the users' well-being and performance. The flexible boom arm can be adjusted to any work situation and object. The monitor has been especially developed for system compatibility and ensures sharp high-definition image reproduction. Positioned behind the object, the monitor is ergonomically located for an unobstructed view of the work object.



### Quick communication and documentation

The easy-to-use and intuitive functionality of the EASY view 3D helps you document work, share data with your team as well as the dentist's practice. Catch the monitor image by footswitch and store the screenshot on the USB flash drive or send it via LAN connection to your PC. Images and video sequences are stored in 2D mode.



perfect  
view



# EASYview 3D

## 3D video microscope

Renfert's EASY view 3D is an innovative video microscope featuring a 3D monitor, which is not only suited for viewing objects, for routine processing and quality control, but equally useful for educational, training and documentation purposes.

### Technical data Head (incl. support arm)

Nominal voltage	100 / 120 / 230 V
Permissible mains voltage / frequency	100–240 V, 50/60 Hz
Power consumption	12 W
Video resolution	Full-HD (1920 x 1080)
Focus distance (from camera lens to object)	430 mm (17")
Magnification	15- / 20-fold
Table top thickness with universal clamp	18–74 mm (0.71–2.92")

### Technical data Monitor

Nominal voltage	100 / 120 / 230 V
Permissible mains voltage / frequency	100–240 V, 50/60 Hz
Screen resolution	Full-HD (1920 x 1080)
Recommended working distance from the screen	500–700 mm (19–28")
Dimensions (W x H x D)	511 x 377 x 170 mm (20.12 x 14.84 x 6.69")
Diagonal screen size	546.1 mm (21.5")

### Ordering information

<b>EASY view 3D</b> , 100–240 V   50/60 Hz <sup>1</sup>	No. 24000500
<b>EASY view 3D</b> , 100–240 V   50/60 Hz with multi voltage power adapter <sup>2</sup>	No. 24001500
<b>EASY view 3D HDMI Video-Recorder</b> <sup>1</sup>	No. 24000502
<b>EASY view 3D HDMI Video-Recorder</b> with multi voltage power adapter <sup>2</sup>	No. 24000504
<b>EASY view 3D HDMI-Splitter</b> <sup>1</sup>	No. 24000503
<b>EASY view 3D HDMI-Splitter</b> with multi voltage power adapter <sup>2</sup>	No. 24000505
<b>EASY view 3D HDMI-Converter 3D/2D</b> <sup>1</sup>	No. 24000501
<b>EASY view 3D HDMI-Converter 3D/2D</b> with multi voltage power adapter <sup>2</sup>	No. 24000506

<sup>1</sup> Suitable for Europe except GB, IT, DK, FL, CH

<sup>2</sup> Suitable worldwide except European countries with CEE 7/3 socket

### Scope of delivery EASY view 3D

EASY view 3D head with power supply unit and power cord (incl. LED-lighting), support arm with cable and base with universal clamp, 3D monitor with power supply unit and power cord, 3D polarization glasses, 4 GB USB flash drive, mouse, foot switch, desk pad, Quick Start Guide



### Advantages

- The 3D mode enables natural hand-eye coordination when performing delicate tasks.
- Parallel use of patient photos, wax-up images, etc. within the workflow with split-screen function.
- High-resolution photos and video sequences can be generated in full HD quality for documentation and communication via a network or integrated USB flash drive.

### Details

- Excellent recognition of different brightness values and surface textures with the black-and-white mode in 2D and 3D.
- Fatigue-free, ergonomic work possible thanks to sustained natural, healthy posture when viewing objects on the monitor.
- Precise, safe and controlled work possible under 15x or 20x fold magnification.

# AUTO spin

## Model system

Using the AUTO spin pin drill, precise working models with plastic base plates can be fabricated. The drilling unit is also compatible with other model-making systems like Giroform® or Zeiser®.



### Advantages AUTO spin pin drilling unit

- Time and cost saving due to reduced use of dental plaster.
- Safe positioning and alignment in challenging impression situations due to the innovative Renfert Level Controller.
- Flexible use for almost any plate geometry due to the universal plate holder with secure double fixation.

### Advantages AUTO spin system components

- AUTO spin base plates: Secure fixation and easy pin removal due to stable acrylic base plates with or without metal disc.
- AUTO spin cone pin-drill: Special cutting geometry for smooth inner surfaces and low compressive stress during drilling.
- AUTO spin cone pin: Cone pin of 14 mm in length for Renfert's AUTO spin system, Giroform®, Zeiser® or similar systems.

### Technical Data

Permissible mains voltage	220–240 V   120 V
Permissible mains frequency	50/60 Hz
Power consumption during drilling	80 W
Power consumption in stand by mode	1.5 W
Laser class	2
Sound pressure level (LpA) in accord. with DIN EN ISO 11202	70 dB(A)
Dimensions (W x H x D)	180 x 368 x 275 mm   7.1 x 14.5 x 10.8"
Permissible drill shaft diameter Ø	3 mm ± 0.03 mm
Permissible drill length	34–46 mm   1.34–1.81"
Weight	~7.6 kg   ~16.8 lbs

### Ordering information

<b>AUTO spin</b> , 220–240 V   50/60 Hz	No. 1860 0000
<b>AUTO spin</b> , 120 V   50/60 Hz	No. 1860 1000
<b>AUTO spin</b> , 100 V   50/60 Hz	No. 1860 2000
<b>AUTO spin base plate standard</b> , 100 pieces	No. 1860 0100
<b>AUTO spin base plate comfort</b> , 100 pieces	No. 1860 0200
<b>AUTO spin secondary plate</b> , 50 pieces	No. 1860 0300
<b>AUTO spin silicone putty</b> , 1 kg   2.2 lbs	No. 1860 0400
<b>AUTO spin cone pin-drill</b>	No. 1860 0500
<b>AUTO spin universal plate holder</b>	No. 1860 0600
<b>AUTO spin universal impression holder</b>	No. 1860 0700
<b>AUTO spin cone pin</b> , 1000 pieces	No. 369 2000

### Scope of delivery AUTO spin

AUTO spin, drill, plate holder, impression holder, Level Controller, adjusting tool for drilling depth (screwdriver Torx T5), tool for drill fixing (angled key Torx T10), laser sticker set, Quick Start Guide, AUTO spin system illustrated manual

## Extraction units with maximum power and quietness

It is easy to concentrate and keep the workplace clean with the SILENT extraction units.

### This is what makes work easier

- 1 extremely quiet
- 2 strong suction power
- 3 intuitive operation
- 4 very long motor running time
- 5 easy calibration
- 6 modern, compact design



silent



compact



#### Overview SILENT

	SILENT powerCAM EC	SILENT compactCAM	SILENT V4	SILENT EC2	SILENT TC2 NEW	SILENT TS2	SILENT TC NEW	SILENT TS	SILENT compact
Single workbench extraction							■	■	■
Two workbench extraction				■	■	■			
Four workbench extraction			■						
Device extraction unit							■	■	■
CAM extraction	■	■							
Filter bag						■		■	
Bagless with filter cleaning	■	■	■	■	■		■		■
Collector motor		■			■	■	■	■	■
EC turbine	■		■	■					



# SILENT EC2

## Two workbench extraction

Powerful, bag-free extraction unit with two independently controlled suction ports, automatic filter cleaning and EC motor technology.



silent



### Advantages

- Secure production process through low-maintenance EC motor technology (> 5,000 operating hours).
- Consistent suction power thanks to automatic re-adjustment.
- Low operating noise of max. 55 dB (A).

### Details

- No follow-up costs due to bag-free dust collection.
- Intuitive operation incl. handpiece calibration with large multifunctional display.

### Technical data

Permissible mains voltage / frequency	220–240 V, 50/60 Hz   120 V, 50/60 Hz   100 V, 50/60 Hz
Suction turbine power	1610 W (230 V)   1440 W (120 V)   1150 W (100 V)
Volume flow (max.)	3980 l/min (2.34 ft³/s)
Max. depression	257 hPa / 3.73 psi (230 V)   262 hPa / 3.80 psi (120 V)   255 hPa / 3.70 psi (100 V)
Filter quality	Class M according to EN 60335-2-69
Max. permitted connected load of the plug-in socket	1840 W (230 V)   430 W (120 V)   350 W (100 V)
Total connected power	3450 W (230 V)   1800 W (120 V)   1500 W (100 V)
Min./max. extern connection pressure	4.5 bar (65 psi) / 8 bar (116 psi)
Number of suction hoses	2
Sound pressure level (LpA) at max. volume flow	55 dB (A)
Fill level dust collector	~ 7.0 l (1.85 gal)
Weight (empty)	~ 18.5 kg (40.8 lbs.)
Dimensions (W x H x D)	285 x 535 x 540 mm (11.2 x 21.1 x 21.2")
Ø suction fittings interior	45 mm (1.77")
Ø suction fittings exterior	50 mm (1.97")

### Ordering information

<b>SILENT EC2</b> , 220–240 V   50/60 Hz	No. 2937 0000
<b>SILENT EC2</b> , 120 V   50/60 Hz	No. 2937 1000
<b>SILENT EC2</b> , 100 V   50/60 Hz	No. 2937 2000
<b>Starter Kit Waste bag</b> for SILENT TC, TC2, EC2	No. 2934 0015
<b>External ventilation</b> for SILENT TC/TC2/EC2/powerCAM EC	No. 2937 0002
<b>Pinch valve, straight</b>	No. 90002 1526
<b>Additional accessories</b>	renfert.com/silent

### Scope of delivery SILENT EC2

SILENT EC2, Quick Start Guide, Quick Reference Card, Compressed air tube (fixed on the unit), Connection set, 2 pinch valves with suction supports (already installed), Suction hose 4 m, 4 end bushings





silent



## SILENT TC2

### Two workbench extraction

Powerful, bag-free extraction unit with two independently controlled suction ports, automatic filter cleaning and long-lasting collector motor.

#### Technical data

Permissible mains voltage / frequency	220–240 V, 50/60 Hz
Suction turbine power	850 W (230 V)
Volume flow (max.)	3980 l/min (2.34 ft³/s)
Max. depression	281 hPa / 4.1 psi (230 V)
Filter quality	Class M according to EN 60335-2-69
Max. permitted connected load of the plug-in socket	2000 W (230 V)
Total connected power	2850 W (230 V)
Min./max. connection pressure	4.5 bar (65 psi) / 8 bar (116 psi)
Number of suction hoses	2
Sound pressure level (LpA) at max. volume flow	55 dB (A)
Fill level dust collector	7.0 l (1.85 gal)
Weight (empty)	23 kg (50.7 lbs.)
Dimensions (W x H x D)	285 x 535 x 540 mm (11.2 x 21.1 x 21.2")
Ø suction fittings interior	45 mm (1.77")
Ø suction fittings exterior	50 mm (1.97")

#### Ordering information

<b>SILENT TC2</b> , 220–240 V   50/60 Hz	No. 2936 0000
<b>Starter Kit Waste bag</b> for SILENT TC, TC2, EC2	No. 2934 0015
<b>External ventilation</b> for SILENT TC/TC2/EC2/powerCAM EC	No. 2937 0002
<b>Pinch valve, straight</b>	No. 90002 1526
<b>Additional accessories</b>	renfert.com/silent

#### Scope of delivery SILENT TC2

SILENT TC2, Quick Start Guide, Compressed air tube (fixed on the unit), Connection set, 2 pinch valves with suction supports (already installed), Suction hose 4 m, 4 end bushings



#### Advantages

- Consistent suction power thanks to automatic re-adjustment.
- 3x longer service life in comparison to conventional collector motors (1 000 operating hours guaranteed).
- Low operating noise of max. 55 dB (A).

#### Details

- No follow-up costs due to bag-free dust collection.
- Working without interruption due to an uncomplicated motor change within minutes.
- Effective dust reduction using a high volume flow (approx. 4 000 l/min.).

# SILENT TC

## Single workbench extraction

Powerful, bag-free extraction unit with automatic filter cleaning and durable collector motor.



silent



### Advantages

- No follow-up costs due to bag-free dust collection.
- Low operating noise of max. 54.3 dB (A).
- 3x longer service life in comparison to conventional collector motors (1 000 operating hours guaranteed).

### Details

- Comfortable operation of the switch-on function through key combination.
- Working without interruption due to an uncomplicated motor change within minutes.

### Technical data

Permissible mains voltage / frequency	220–240 V, 50/60 Hz
Suction turbine power	850 W (230 V)
Volume flow (max.)	3980 l/min (2.34 ft³/s)
Max. depression	281 hPa / 4.1 psi (230 V)
Filter quality	Class M according to EN 60335-2-69
Max. permitted connected load of the plug-in socket	2000 W (230 V)
Total connected power	2850 W (230 V)
Number of suction hoses	1
Sound pressure level (LpA) at max. volume flow	54.3 dB (A)
Fill level dust collector	7.0 l (1.85 gal)
Weight (empty)	22.0 kg (48.5 lbs.)
Dimensions (WxHxD)	275 x 535 x 540 mm (10.8 x 21.1 x 21.3")
Ø suction fittings interior	45 mm (1.77")
Ø suction fittings exterior	50 mm (1.97")

### Ordering information

<b>SILENT TC</b> , 220–240 V   50/60 Hz	No. 2935 0000
<b>Starter Kit Waste bag</b> for SILENT TC, TC2, EC2	No. 2934 0015
<b>External ventilation</b> for SILENT TC/TC2/EC2/powerCAM EC	No. 2937 0002
<b>Additional accessories</b>	renfert.com/silent

### Scope of delivery SILENT TC

SILENT TC, Quick Start Guide, Suction hose 3 m incl. 2 end mufflers



silent



# SILENT powerCAM EC

## Extraction unit for CAM systems

Powerful, bag-free extraction unit with automatic filter cleaning and EC motor technology for heavily used CAM units.

### Technical data

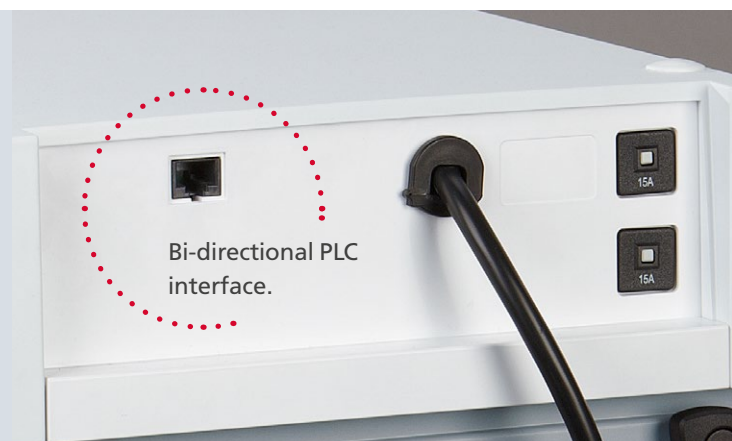
Permissible mains voltage / frequency	220–240 V, 50/60 Hz   120 V, 50/60 Hz   100 V, 50/60 Hz
Nominal voltage	230 V   120 V   100 V
Suction turbine power	1610 W (230 V)   1440 W (120 V)   1250 W (100 V)
Volume flow (max.)	3984 l/min (2.34 ft³/s)
Max. depression	257 hPa / 3.73 psi (230 V)   262 hPa / 3.80 psi (120 V)   255 hPa / 3.70 psi (100 V)
Filter quality	Class M according to EN 60335-2-69
CAM interface	RJ 45 socket
PLC:	2 x turbine suction level 1, turbine suction level 2, turbine off, filter cleaning / 2 x filter cleaning – status information
Input signal / Output signal	
Sound pressure level (LpA) at max. volume flow	54.3 dB (A)
Fill level dust collector	~ 7.0 l (1.85 gal)
Weight (empty)	~ 18.0 kg (39.7 lbs)
Dimensions (W x H x D)	270 x 535 x 540 mm (10.6 x 21.1 x 21.2")
Ø suction fittings interior	42 mm (1.65")

### Ordering information

<b>SILENT powerCAM EC</b> , 220–240 V   50/60 Hz	No. 2939 0000
<b>SILENT powerCAM EC</b> , 120 V   50/60 Hz	No. 2939 1000
<b>SILENT powerCAM EC</b> , 100 V   50/60 Hz	No. 2939 2000
<b>Interface cable Type A</b> , for vhf, 5-pin, 5 m	No. 2934 0005
<b>Interface cable Type B</b> , for Roland DG, 5 m	No. 2934 0006
<b>Interface cable Type C</b> , for imes-icore, 5 m	No. 2934 0008
<b>Interface cable Type D</b> , for Amann Girrbach, 5 m	No. 2934 0009
<b>Interface cable Type E</b> , for Yenadent, 5 m	No. 2934 0010
<b>Interface cable Type F</b> , for Zirkonzahn, 5 m	No. 2934 0011
<b>Interface cable Type F</b> , for Zirkonzahn with C14 adapter, 5 m	No. 2934 0012
<b>Interface cable Type G</b> , for vhf, 6-pin, from K5	No. 2934 0013
<b>External ventilation</b> for SILENT TC/TC2/EC2/powerCAM EC	No. 2937 0002
<b>Additional accessories</b>	renfert.com/silent

### Scope of delivery SILENT powerCAM EC

SILENT powerCAM EC, Quick Start Guide, Quick Reference Card, 3 disposal bags (1 pc. inserted in the dust drawer), Suction hose 2 m incl. 2 end mufflers



Bi-directional PLC interface.

### Advantages

- Bi-directional communication between extraction unit and CAM unit thanks to the PLC interface.
- Low operating noise of max. 54.3 dB(A).
- Safe production process through low-maintenance EC motor technology (> 5,000 operating hours).

### Details

- High volume flow of approx. 4 000 l/min.
- No follow-up costs due to bag-free dust collection.
- Safe disposal of fine milling dust with the help of a disposal bag.

# GEO Expert Functional

## Functional modeling waxes

GEO Expert Functional waxes are high-quality modeling waxes for functional wax-up according to the natural wax-up technique (NAT) by Dieter Schulz.



### Advantages

- Perfect positioning of color coded occlusal surfaces thanks to coordinated flow and modeling properties.
- Easy implementation of functional tooth structures by following wax-up instructions.
- Flexible working as it is suitable for using the electrical wax knife and the Bunsen flame.

### GEO Expert Functional Wax Set

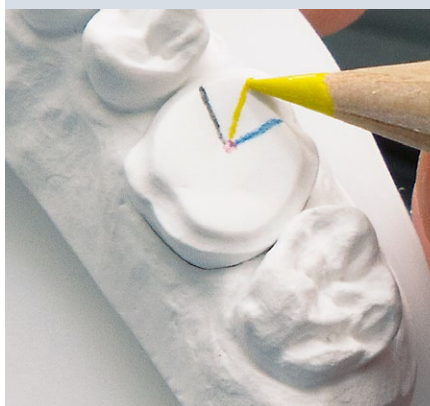
Wax set for the production of functional models and restorations through the occlusal compass according to Dieter Schulz' "Natural waxing-up technique" and philosophy as well as the concept of Oliver Dreher.

### Ordering information

<b>GEO Expert Functional Wax Set, German</b>	No. 634 0900
<b>GEO Expert Functional Wax Set, English</b>	No. 634 0901
<b>GEO Expert Functional Wax Set, Spanish</b>	No. 634 0902
<b>GEO Expert Functional Wax Set, Italian</b>	No. 634 0903
<b>GEO Expert Functional Wax Set, French</b>	No. 634 0904
<b>GEO Expert Functional Wax Set, Portuguese</b>	No. 634 0905
<b>GEO Expert Functional Wax Set, Russian</b>	No. 634 0906
<b>GEO Expert Functional Wax Set, Chinese</b>	No. 634 0907
<b>GEO Expert Functional Wax green, 40 g (1.41 oz.)</b>	No. 634 0910
<b>GEO Expert Functional Wax blue, 40 g (1.41 oz.)</b>	No. 634 0920
<b>GEO Expert Functional Wax yellow, 40 g (1.41 oz.)</b>	No. 634 0930
<b>GEO Expert Functional Wax gray, 40 g (1.41 oz.)</b>	No. 634 0940
<b>GEO Expert Functional Wax Set Refill red &amp; orange, 4x4 g (4x0.14 oz.)</b>	No. 634 0960

### Scope of delivery GEO Expert Functional Wax Set

Wax presentation palette with transparent lid and user manual according to Oliver Dreher's philosophy; 4 modeling waxes of 40 g each: GEO Expert Functional wax gray, blue, green, yellow; 2 modeling waxes of 4 g each: GEO Expert Functional wax red, orange; 2 DIN A5 sheets with Occlusal Compass (24 labels each sheet)







# GEO Expert Gingiva Set A. Bruguera

## Esthetic modeling waxes

GEO Expert Gingiva waxes in pink and red are suitable for creating a gingival wax-up in the anterior and posterior regions, especially for implant superstructures.

### Ordering information

<b>GEO Expert Gingiva Set A. Bruguera, German</b>	No. 6340800
<b>GEO Expert Gingiva Set A. Bruguera, English</b>	No. 6340801
<b>GEO Expert Gingiva Set A. Bruguera, Spanish</b>	No. 6340802
<b>GEO Expert Gingiva Set A. Bruguera, Italian</b>	No. 6340803
<b>GEO Expert Gingiva Set A. Bruguera, French</b>	No. 6340804
<b>GEO Expert Gingiva Set A. Bruguera, Portuguese</b>	No. 6340805
<b>GEO Expert Gingiva Set A. Bruguera, Russian</b>	No. 6340806
<b>GEO Expert Gingiva Set A. Bruguera, Chinese</b>	No. 6340807
<b>GEO Expert Gingiva pink A. Bruguera, 40 g (1.41 oz.)</b>	No. 6340700
<b>GEO Expert Gingiva red A. Bruguera, 40 g (1.41 oz.)</b>	No. 6340600

### Scope of delivery GEO Expert Gingiva Set A. Bruguera

User guide according to the philosophy of August Bruguera; 2 gum colored modeling waxes of 40 g each: GEO Expert Gingiva pink, red

### Range of applications

GEO Expert Gingiva	Conventional crown and bridge techniques	All-ceramics and pressable ceramics*	Esthetic wax-up	Special waxes
pink	■	■	■	–
red	■	■	■	–

\*Burns without residue



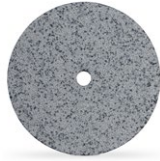
### Advantages

- Red and white esthetics are possible through two transparent and natural-looking pink and red gingiva modeling waxes.
- Easy fabrication of monolithic and esthetic wax-ups with the help of a guide according to August Bruguera's philosophy.
- Perfect in combination with the esthetic, tooth-colored modeling waxes from the GEO Expert Wax Set A. Bruguera.



# Dynex Brilliant

Grinding disc 20 x 0.8 mm



Size 1:1



Diamond grinding disc with glass fiber reinforcement, created for processing and trimming ceramic materials, especially suited for lithium disilicate.

## Advantages

- Avoids material damages due to very low thermal impact.
- Safe trimming of press sprues due to very high removal capacity.
- Gentle to material due to extremely low vibrations.

## Details

- Prevention of cracking in ceramic materials due to low heat generation.

# Dynex

Separating disc 22 x 0.15 mm



Size 1:1



Flexible and robust, doubly glass fiber reinforced separating disc for precious and non-precious metal.

## Advantages

- Efficient separation and precise processing.
- Processing safety due to top cutting performance.
- Gentle to material due to extremely low thermal impact.

## Details

- Suitable for precise cutting and economic separating of precious and non-precious metal interdental areas.

## Technical data

Max. rpm	50,000
Recommended rpm	5,000

## Ordering information

**Dynex Brilliant**, Ø 20 mm (0.79"), thickness 0.80 mm (0.03"), 1 piece No. 560820

## Technical data

Max. rpm	50,000
Recommended rpm	15,000

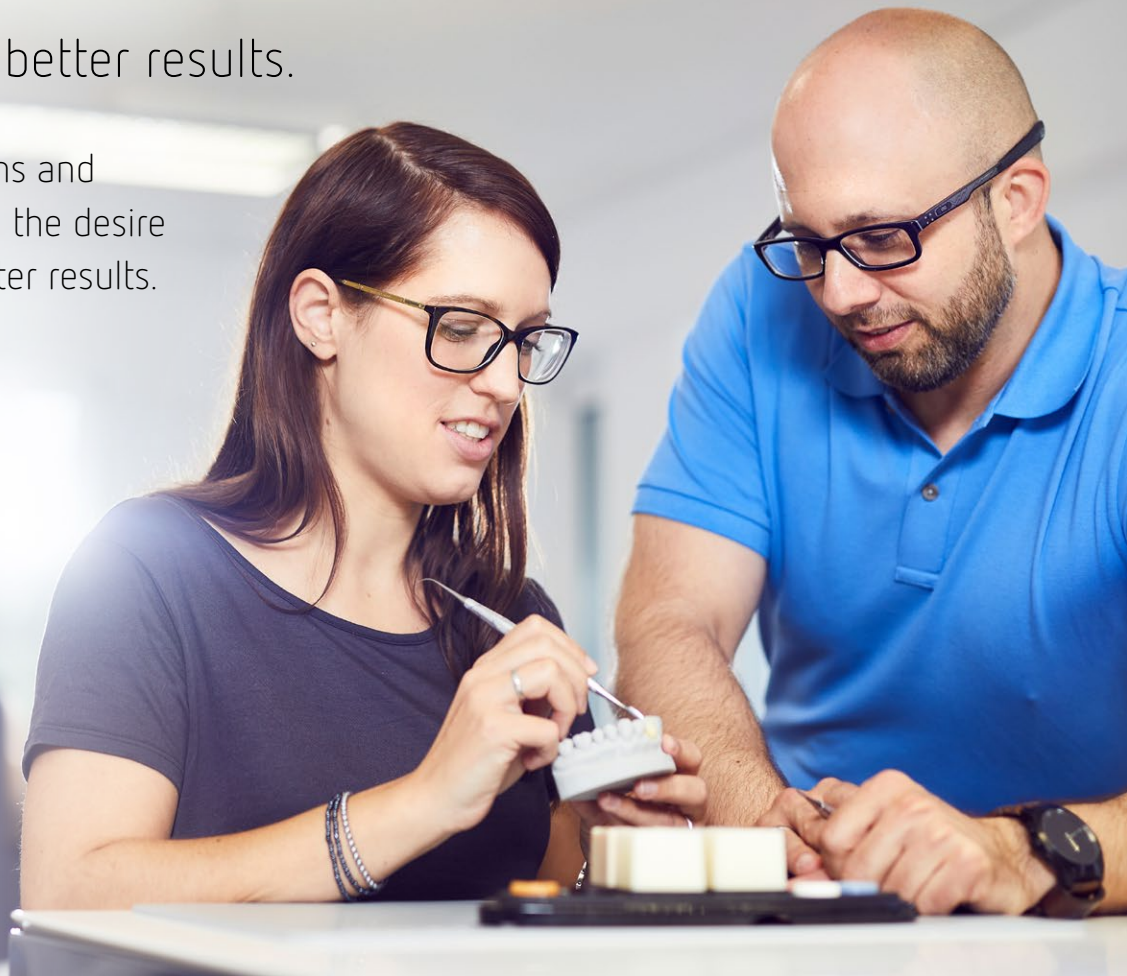
## Ordering information

**Dynex**, Ø 22 mm (0.87"), thickness 0.15 mm (0.01"), 20 pieces No. 571522

# Dental Education

More knowledge, better results.

Regular learning sessions and interaction coupled with the desire to improve, leads to better results.



## Renfert Course Topics

- Histo-anatomic structure
- Esthetic and hyperrealistic wax-ups
- Dental photography
- Dental communication training
- Layering ceramics, pressable ceramics and CAD/CAM technology
- Monolithic and diagnostic wax-ups
- Model production – the lab's showpiece
- Functional theory and near-to-nature wax-up techniques

## The right course for every need

As well as the courses for experienced dental technicians, we also offer a range of specifically designed courses for trainees and junior dental technicians. We promote the junior staff and elaborate the basis for functional and natural looking restorations together.



## Renfert Course Program

Your motivation and our passion for improvement allow us to offer you an array of interesting courses presented by top lecturers in modern surroundings.

Course program and contents  
[renfert.com/education](http://renfert.com/education)







Why a passion for dental craftsmanship and making work easy go hand in hand for Renfert.

At Renfert, we strive to make the dental technicians' and dentists' work easier and enable an ideal workflow. Our equipment and materials are developed in close cooperation with the people who work with them daily. Many users prize the quality and rely on this claim every day they work with Renfert products.

↓  
making work easy

The Renfert logo is centered within a red circle. The logo itself is white, with the word "Renfert" in a sans-serif font, flanked by two white curved lines that suggest a stylized 'R' or a dental arch.

## WORKFLOW GUARANTEE

3 year guarantee  
10 year spare parts service  
Activity guarantee

[www.renfert.com](http://www.renfert.com)