

And here is what it looks like in practice:



Class III cavity



1 shade restoration with CLEARFIL MAJESTY™ Esthetic, shade A2.



Diastema of upper anterior teeth.



Restoration with CLEARFIL MAJESTY™ Esthetic, shades A2 and A3.

Courtesy of Dr. J. D. Scholtenius, Wergea, The Netherlands

Product range and ordering information:



CLEARFIL MAJESTY™ Esthetic

- 2160 EU CLEARFIL MAJESTY™ Esthetic A1 (3.6 g/2 ml)
- 2161 EU CLEARFIL MAJESTY™ Esthetic A2 (3.6 g/2 ml)
- 2162 EU CLEARFIL MAJESTY™ Esthetic A3 (3.6 g/2 ml)
- 2163 EU CLEARFIL MAJESTY™ Esthetic A3.5 (3.6 g/2 ml)
- 2164 EU CLEARFIL MAJESTY™ Esthetic A4 (3.6 g/2 ml)
- 2166 EU CLEARFIL MAJESTY™ Esthetic B2 (3.6 g/2 ml)
- 2167 EU CLEARFIL MAJESTY™ Esthetic B3 (3.6 g/2 ml)
- 2170 EU CLEARFIL MAJESTY™ Esthetic C3 (3.6 g/2 ml)
- 2172 EU CLEARFIL MAJESTY™ Esthetic T (3.6 g/2 ml)
- 2173 EU CLEARFIL MAJESTY™ Esthetic E (3.6 g/2 ml)
- 2174 EU CLEARFIL MAJESTY™ Esthetic XL (3.6 g/2 ml)
- 2175 EU CLEARFIL MAJESTY™ Esthetic OC (3.6 g/2 ml)
- 2177 EU CLEARFIL MAJESTY™ Esthetic OA2 (3.6 g/2 ml)
- 2178 EU CLEARFIL MAJESTY™ Esthetic OA3 (3.6 g/2 ml)
- 2179 EU CLEARFIL MAJESTY™ Esthetic OA4 (3.6 g/2 ml)
- 2182 EU CLEARFIL MAJESTY™ Esthetic HO (3.6 g/2 ml)
- 2185 EU CLEARFIL MAJESTY™ Esthetic AM (3.6 g/2 ml)
- 2152 EU CLEARFIL MAJESTY™ Esthetic shade guide

kuraray

Noritake



CLEARFIL MAJESTY™ Esthetic

The best in esthetics.
 Hardly distinguishable from natural tooth substance.
 Good radiopacity. Fluorescence, like real.

YOUR CONTACT

Kuraray Europe GmbH
 BU Medical Products
 Philipp-Reis-Strasse 4
 65795 Hattersheim am Main
 Germany

Phone DACH +49 (0) 69-305 35 835
 Phone REST OF EUROPE +49 (0) 69-305 85 980
 Fax +49 (0) 69-305 98 35 835
 E-Mail dental.eu@kuraray.com
 Website www.kuraraynoritake.eu

Kuraray Noritake Dental Inc.
 1621 Sakazu, Kurashiki, Okayama 710-0801, Japan

The best in esthetics.

In only one color layer.

Extensive multi-layer work is a thing of the past. With CLEARFIL MAJESTY™ Esthetic, you don't need different color layers any more to get an esthetic restoration. Just choose a single matching shade.



Cavity



Restoration with CLEARFIL MAJESTY™ Esthetic – with 1 shade only.

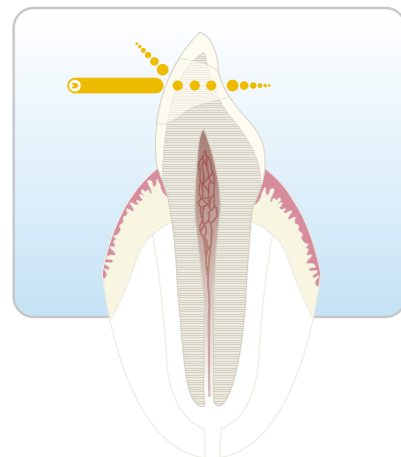


Restoration with a regular esthetic composite (FSX) using 1 shade only. A dark shadow can be seen.

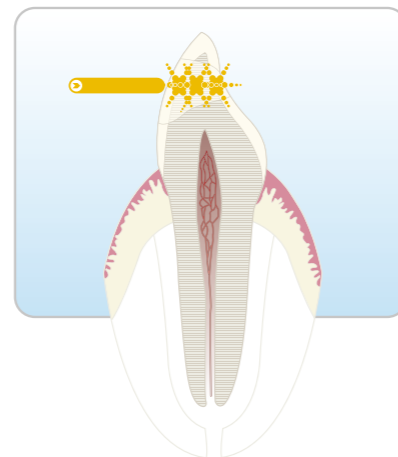
Conventional esthetic composites are applied in several color layers, in order to recreate the look of natural tooth substance. CLEARFIL MAJESTY™ Esthetic does it, however, by using just one shade.

Light-diffusion like grown tooth substance.

With CLEARFIL MAJESTY™ Esthetic, the optical properties of natural tooth substance can be faithfully reproduced for the first time. Cavity margins can not be recognized after treatment, unlike with conventional composites.



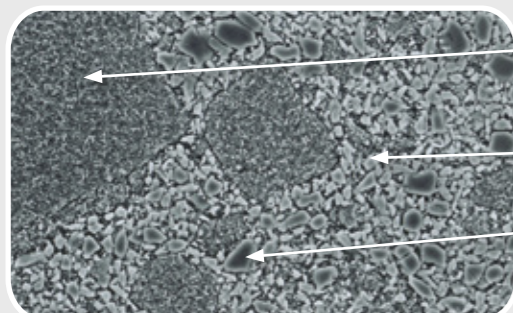
Most composites transmit light directly



CLEARFIL MAJESTY™ Esthetic diffuses light naturally

Natural tooth substance absorbs light and diffuses it in all directions. Due to its unique composition, CLEARFIL MAJESTY™ Esthetic offers nearly identical properties. Conventional composites, on the other hand, often appear darker than natural tooth substance, as they absorb light and do not diffuse it.

New filler in a unique composition.



Light-diffusion filler.

Newly developed organic filler including nanofillers with high transparency. It diffuses light like natural tooth substance.

Highly refractive index matrix.

The matrix shows a high refraction, which reduces color change after polymerization.

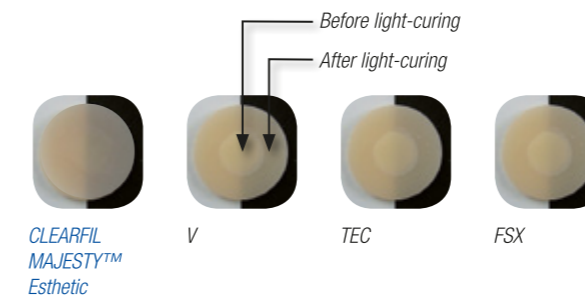
Radiopaque nanofiller.

Thanks to this new filler CLEARFIL MAJESTY™ Esthetic can be clearly recognized on an X-ray and can also be polished to a high shine.

By courtesy of Dr. Toshimoto Yamada, DDS, PhD/Toranomon Hospital

Hardly distinguishable from natural tooth substance.

Least color change after light-curing!



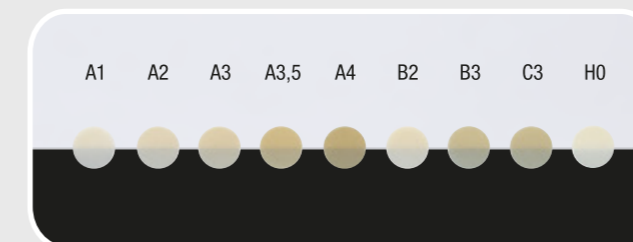
The fact that CLEARFIL MAJESTY™ Esthetic does only slightly change its color after light-curing also makes your work easier. As you work, you can already see whether the color matches. Other esthetic composites usually become more transparent after light-curing.

Other advantages:

- CLEARFIL MAJESTY™ Esthetic is little affected by ambient light. With a working time of 4.5 minutes, you can work with CLEARFIL MAJESTY™ Esthetic almost twice as long as with other composites, which will already have cured in this time.
- The material is easy to use and does not stick to instruments.
- CLEARFIL MAJESTY™ Esthetic offers high abrasion resistance and so can be used for all kinds of cavities without a problem.

Easy shade selection.

Standard shades



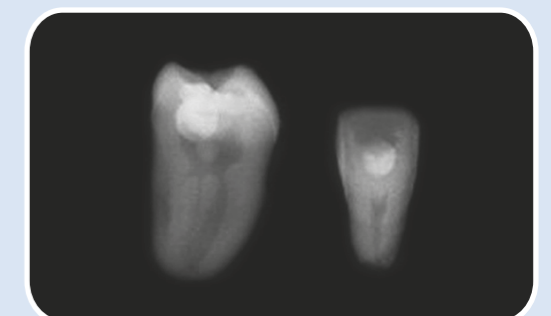
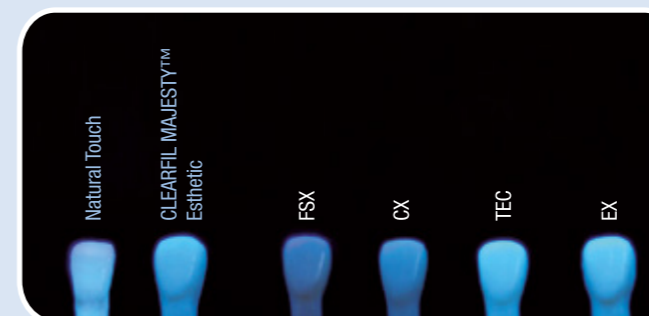
The 9 standard shades meet most of restorations. Additionally, 8 complementary shades for tricky cases are available.

Complementary shades



H0: Hollywood Opaque, T: Transparent, AM: Amber, E: Enamel, XL: Extra Light, OC: Occlusal

Good radiopacity. Fluorescence, like real.



After being applied to the cavity, CLEARFIL MAJESTY™ Esthetic is hardly distinguishable from natural tooth substance. Due to its radiopacity, however, the material can easily be located. CLEARFIL MAJESTY™ Esthetic can also hardly be distinguished from natural tooth substance by its fluorescence.